

Creative Paradise has worked from a prototype created by Patty Gray to make this beautifully dimensional frit-cast flower mold!

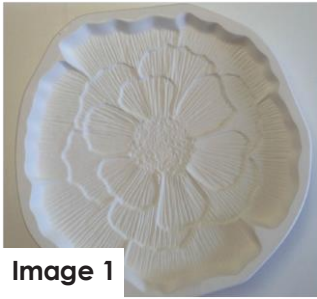


Image 1



Image 2

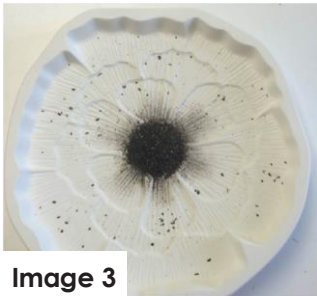


Image 3



Image 4

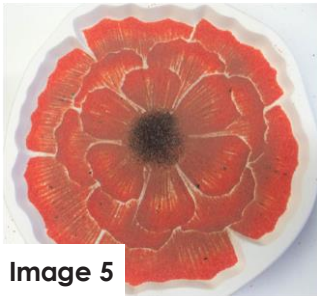


Image 5



Image 6

Materials:

- [LF141 Patty Gray Poppy](#)
- [GM125 Patty Gray Round Slump](#)
- COE96 Frits (see right)
- Suitable Glass Separator/ZYP
- Frit Placement Tools

F1 Powder Frits:

- Black
- Black Cherry Opal

F2 Fine Frits:

- Black
- Flame Opal
- Red Opal

F3 Medium Frits:

- Black
- Red Opal
- Clear



Image 10

Remember to always wear a mask when working with powder frits and/or spray-on glass separator, and always treat your molds thoroughly with separator.

After treating your molds, place F1 Black into the center of the poppy and over into the middle of the bases of the center petals (Image 2).

Fill just the center of the flower with F2 Black and cast a few additional pieces into the flower petals as well (Image 3).

Place F2 Flame Opal into the recesses of the petals, leaving the ridges between and on them uncovered as shown in Image 4.

Place F1 Black Cherry Opal around the center of the poppy and on the bases and sides of the petals (Image 5).

Fill the mold with F2 Red Opal until all the raised edges and ridges are completely covered (Image 6).

Back the F2 Red Opal with F3 Red Opal until everything is covered and the mold is filled roughly 1/4" deep (Image 7).

Fill the mold with F3 Clear until it is holding about 565 grams of frit total (Image 8). Gently sweep the frit back from the mold wall into the center and fire to a Full Fuse using either the suggested schedule in Table 1 or your own favorite Full Fuse with a bubble squeeze.

Once everything has cooled, remove the glass from the mold and wash off any excess separator. Then center the flower onto the GM125 that has already been prepared with separator and Slump using the suggested schedule in Table 2 or your own preferred Slump schedule.

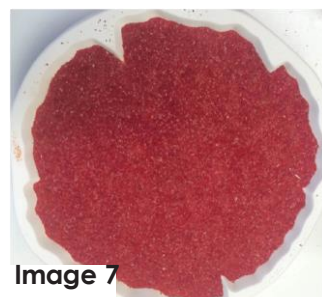


Image 7



Image 8

Table 1: Full Fuse*

Seg	Rate	Temp °F	Hold
1	275	1215	30
2	50	1250	30
3	275	1330	10
4	350	1465	10
5	9999	950**	60
6	100	500	05

**If using COE90, adjust this to 900°F

Table 2: Slump*

Seg	Rate	Temp °F	Hold
1	275	1215	30
2	50	1250	30
3	9999	950**	60
4	100	500	05

**If using COE90, adjust this to 900°F

[*Before your fire in your kiln, please click here to read our important firing notes to see if you need to adjust our schedules!](#)



Image 9