

Snowflake Embossed Ornaments

Materials:

- [DT27 Snowflake Texture](#)
- COE96 Glass (See Right)
- Suitable Glass Separator/ZYP
- Glass Cutting Supplies
- Circle Cutting Tool
- 20-Gauge Bare Copper Wire

Begin by treating the mold thoroughly with glass separator. We recommend using spray-on ZYP.

When applying spray-on separator, make sure to wear a mask during application.

Suggested Glass (COE96):

- **Sheet Glass:**
 - Clear Iridescent
 - Pale Purple Transparent
 - Cobalt Blue Transparent
 - Pale Blue Transparent
 - Blackberry Cream Opalart
 - Black Opal
 - Orange Opal
 - Corkscrew Dichroic on Clear
- **Frits:**
 - F2 Fine White Opal
- **Misc.:**
 - Black Rod
 - Black Opal Stringer
 - Clear Dichroic Flakes



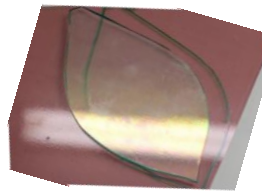
Questions? Email us!
creativeparadiseinc@live.com

Step 1



Treat your mold as indicated above and allow time to dry.

Step 2



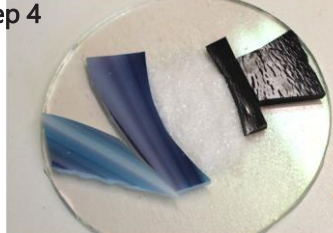
Use the **Ornament Shape Patterns** on **Page 2** to cut your desired shapes once in Clear Irid and again in the desired Transparent color. For the snowman, cut the 3.75" circle twice from Clear Irid.

Step 3



To begin the snowman ornament, apply about a tablespoon of F2 White Opal frit to the non-irid side of one of the circles. The frit should be placed in the area indicated on the pattern.

Step 4



Use the **Snowman Parts Pattern** on **Page 2** to cut the two scarf shapes from Blackberry Cream Opalart and the two hat shapes from Black Opal and arrange around the frit pile as shown above.

Step 5



Refer to the **Snowman Parts Pattern** on **Page 2** for the following face shapes. Use a mosaic nipper to nip thin segments from a Black Rod for eyes and cut a piece of Orange Opal for the nose. Carefully hold a Black Stringer over a candle flame and gently bend into a "U" shape. Allow it to cool, then break the ends to match the size of the mouth shown in the Pattern. Arrange the face parts accordingly on the frit.

Cut Corkscrew Dichroic in the shape of the Hat Band Pattern and place just above the Hat Brim with the dichroic coating facing up.

Step 6



Place all of the Clear Irid bases onto the prepared mold irid-side down. Position the shapes with the texture beneath in aesthetically pleasing areas of the ornaments. Place the transparent colors on their corresponding ornaments and the circle with the prepared snowman face on its corresponding circle as well.

Apply small dabs of clear Elmer's Glue here and there on the ornaments and add bits of Clear Dichroic Flakes into the glue. Cut one 1" long piece of 20-gauge bare copper wire for each ornament. Bend it into a "U" shape and place the ends between the two layers of glass at the top of each ornament. To disguise the ends of the wire, you can add an additional 1/4" x 1/2" piece of Clear Dichroic on the glass over them.

Step 7*

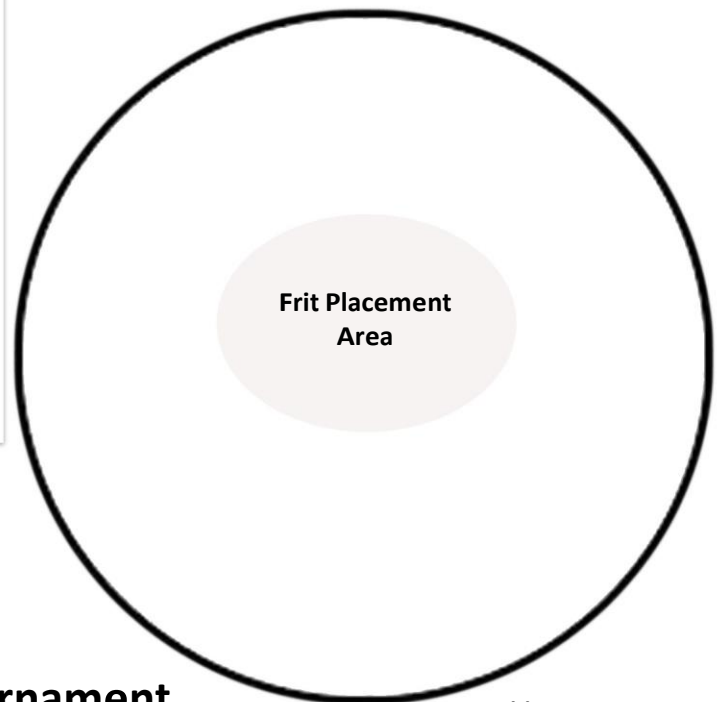
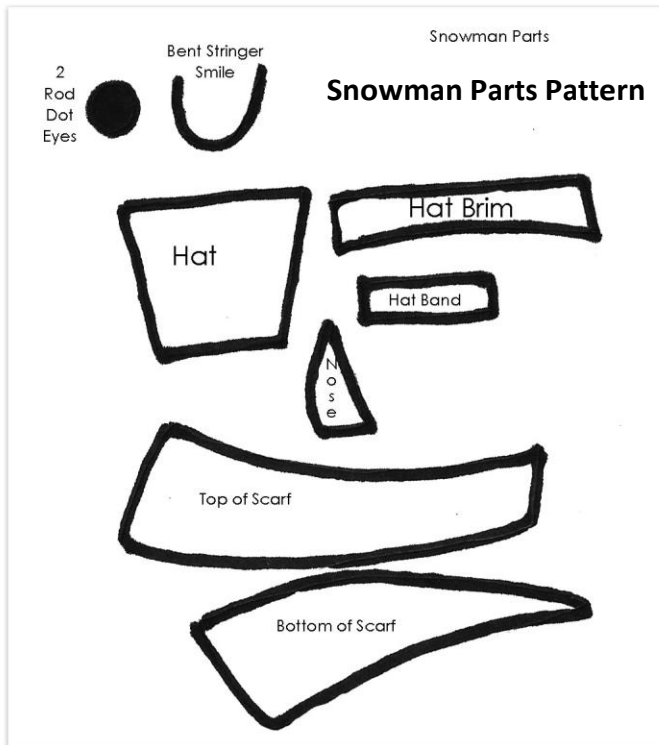
Fire your ornaments on the mold to a Full Fuse using the suggested schedule in **Table 1** on **Page 2** or your own preferred Full Fuse.



*Before firing, it's important to know your kiln to see if you need to adjust our suggested schedules for your use. For tips on how to do that, [please click here to see our Important Firing Notes!](#)

Segment	Rate	Temp (°F)	Hold
1	275	1000	05
2	275	1225	10
3	250	1300	05
4	275	1465	05
5	9999	950**	60
6	100	800	01

**If using COE90, adjust this to 900°F



Ornament Shape Patterns

Make sure to print "Actual Size"/100%

