

Standing Nativity Scene

Materials:

(All glass used is COE96)

- [DT34 Nativity Texture](#)
- [GM191 Large S-Curve](#)
- ZYP/Suitable Glass Separator
- 12.75" x 6.75" Sheet of Wissmach 96-3 White
- F1 Powder Black Frit
- F2 Fine Transparent Frit (colors shown on Page 2)
- Pipette or Small Spoon
- Earwax Vacuum (optional)
- Respirator Mask



Create a vibrant stained glass style Nativity scene using our DT34 texture mold. The piece pictured in the image above has been slumped on our GM191 S-Curve allowing it to stand alone. Place a tea light behind the glass to create a beautiful and seasonal source of ambient light.

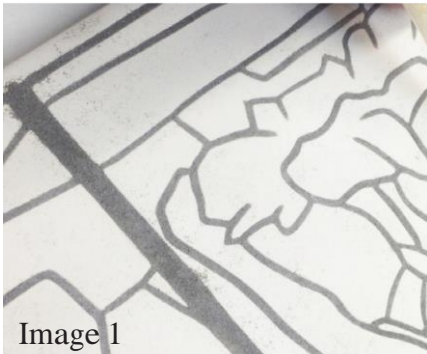


Image 1

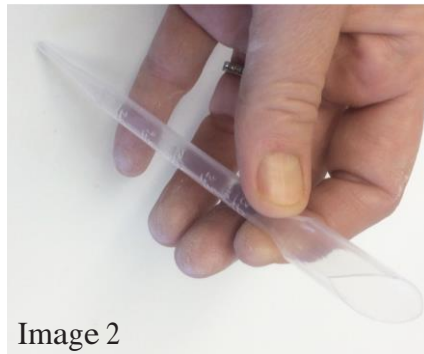


Image 2



Image 3

Prepare your mold with separator and allow plenty of time to dry. If using a spray, make sure to spray in a well-ventilated area.

Fill in the border detail lines of the mold with Black Powder frit. Use your finger or a soft brush to sweep stray frit off the raised areas and into the crevices.

To create your own tool for exact frit placement, cut the top of a plastic pipette at an angle, as seen in Image 2, and fill it with a small amount of frit. The pointed end of the pipette can then be used to place frit gently and precisely.

The following page contains a picture of the finished texture with numeric markers indicating areas of different colors. Use the accompanying list as a key to create the piece exactly as shown, or use any frit colors and your own artistic preferences!

Please Note:

- All frits were fine and transparent unless otherwise noted
- All face and hand areas were filled with Pale Amber
- All hair and beard areas were filled with Walnut
- The sky was filled with colors 1-4 that were blended slightly wherever they met

Frit Placement Color Key:

- | | |
|--|---|
| <p>1– Dark Blue</p> <p>2 – Light Blue</p> <p>3 – Sky Blue</p> <p>4 – Pale Purple</p> <p>5 – Sapphire</p> <p>6 – Bronze</p> <p>7 – Walnut</p> <p>8 – Halos were bordered with Tangerine then filled with Yellow</p> <p>9 – Star was filled with Yellow. Rays were filled from top downwards by blending Orange, Tangerine, Yellow, and Straw</p> <p>10– Tangerine just under the baby, the rest Straw</p> <p>11– Dark Amber</p> | <p>12– Moss Green</p> <p>13– Sand filled from top downwards by blending Pale Amber, Medium Amber, and Dark Amber</p> <p>14– Olive Green</p> <p>15– Powder Paynes Gray Opaque for sheep face, legs, and tail tip with Straw placed over it. Straw for sheep’s wool as well</p> <p>16– Teal Green</p> <p>17– Light Cherry Red</p> <p>18– Ming Green</p> <p>19– Light Purple</p> <p>20 – Rust</p> <p>21 – Yellow</p> <p>22 – Tangerine</p> |
|--|---|

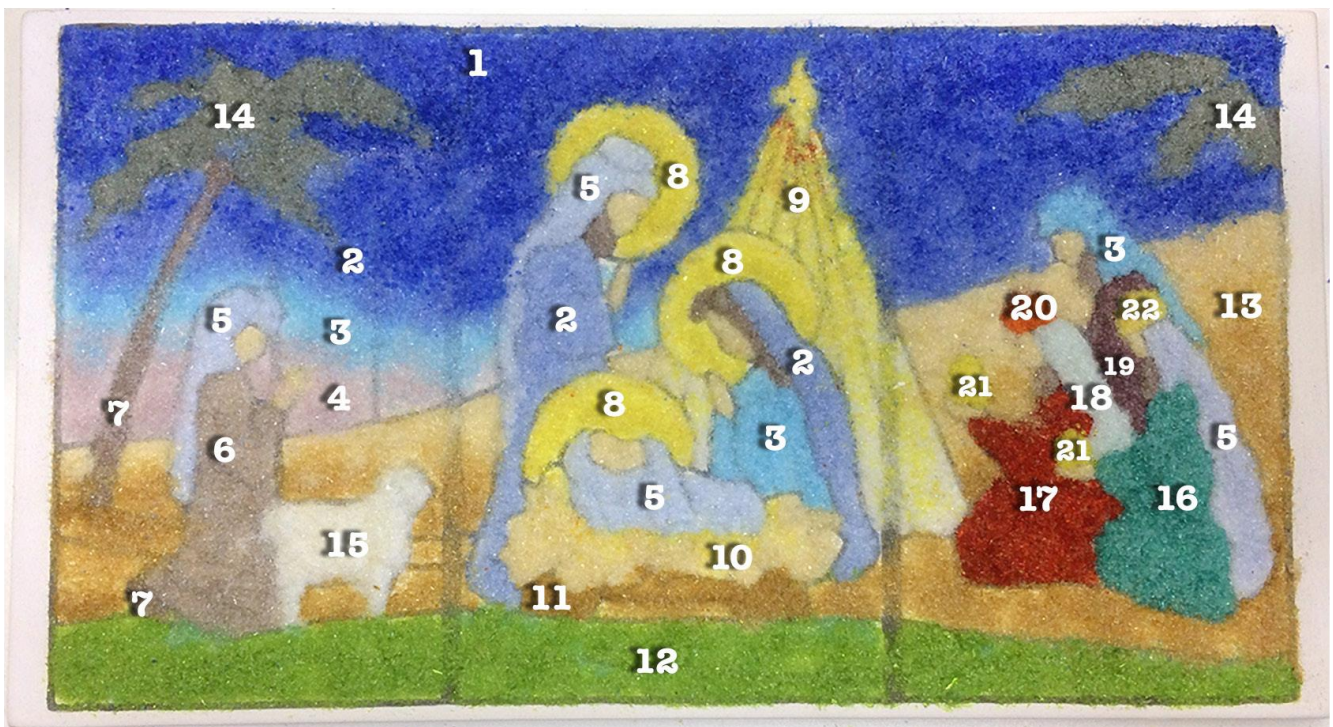


Image 4



Image 5



Image 6

Once you have finished adding frit, cut a 12.75" x 6.75" rectangle of Wissmach 96-3 White Sheet glass. Before placing the sheet atop the frit, place the mold in your kiln elevated on 1/2" kiln posts, then gently place the glass on top. Fuse according to the suggested schedule in **Table 1** or your own preferred Full Fuse (we suggest one with a bubble squeeze segment due to the amount of frit).

| Table 1.* Fuse Schedule | | | |
|-------------------------|------|-------|------|
| Segment | Rate | Temp | Hold |
| 1 | 275 | 1215 | 30 |
| 2 | 50 | 1250 | 45 |
| 3 | 350 | 1415 | 03 |
| 4 | 9999 | 950** | 90 |

**If using COE90, adjust to 900°F

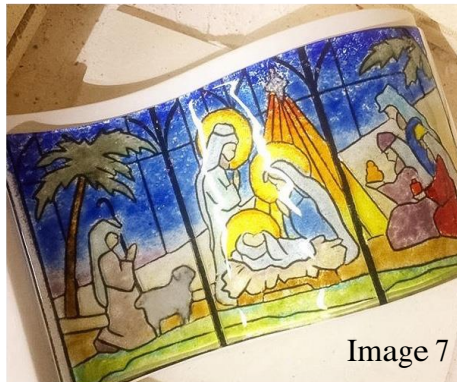


Image 7

| Table 2.* Slump Schedule | | | |
|--------------------------|------|-------|------|
| Segment | Rate | Temp | Hold |
| 1 | 250 | 1220 | 20 |
| 2 | 9999 | 950** | 90 |

**If using COE90, adjust to 900°F

* Before you use our firing schedule check out our important firing notes by [clicking here](#).

Once your piece has fused and cooled, place it on the GM191 (that has already been treated with separator) and Slump using the suggested schedule in **Table 2** or your own preferred Slump schedule.

Alternative ways to make the Nativity scene!



Use Clear sheet glass instead of White for a more transparent pastel look.



Use any shade of transparent glass without frit and fuse on the texture, then slump on the GM97 to create a tray.