



# Garden Bees

*Creative Paradise Inc.*



## Materials:

- LF254 Large Bee
- COE96 Glass (See Right)
- Suitable Glass Separator (ZYP Recommended)
- Frit Placement Tools
- Gold Paint Pen (Optional)
- Optional for Stemming:
  - Two-Part Epoxy or Similar Strong Adhesive
  - 1/4" Copper Tube
  - 14-8 Crimp Sleeve

## Suggested Glass:

- FI Powder Frits:
  - Chestnut
  - Chocolate
  - Black
  - Marigold
  - Sunflower
  - Sky Blue
- F2 Fine Black Frit
- F3 Medium Clear Frit
- Clear Sheet Glass

## Before You Bee-gin:

- We recommend using spray-on ZYP to prime our molds. Wear a mask during application
- Make sure to always wear a mask when using powder frits
- Our firing schedules are suggestions. You know your kiln best- adjust accordingly!



Once the separator is completely dry, start by adding FI Chestnut into the bee's upper body, legs, head, and antennae.



Back the upper body and head with a thin layer of FI Chocolate.



Add a layer of FI Black to the legs, upper body, and head. Place FI Black into the stripes of the lower body as well.



Back the upper body, head, legs, antennae, and stripes of the lower body with F2 Black.



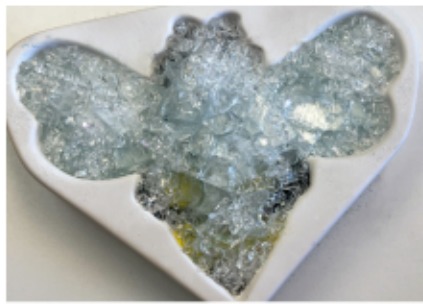
Sprinkle FI Marigold into the empty stripes of the lower body.



Back the Marigold with FI Sunflower (F2 Fine frit will also work).



Sprinkle FI Sky Blue into the wing veins. Use a soft brush to sweep it into the veins then press the frit down gently with your finger. **Take care not to disturb the separator.**



Add nipped bits and scraps of Clear sheet glass to the wings. Take care not to disturb any separator with the sharp edges as you place them.

Back the entire mold cavity with F3 Clear frit until full. If using fill weights, this is about 400 grams. Transfer the filled mold to a level kiln shelf and fire using the suggested schedule in **Table I** or your own preferred Full Fuse.

Once the glass is cool remove it from the kiln and clean off any residual separator with water and a stiff (but not wire) brush. If desired, use a Gold Paint Pen to highlight details and add some sparkle.

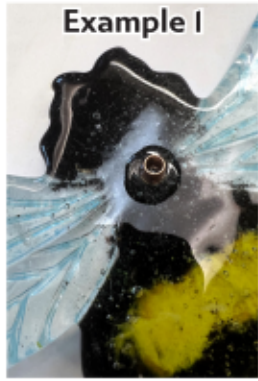
**Table I: Full Fuse\***

Seg.	Rate	Temp (°F)	Hold
1	300	1150	45
2	150	1300	20
3	400	1460	10
4	9999	950**	60

\*\*If using COE90, adjust this to 900°F

\*Before firing, it's important to know your kiln to see if you need to adjust our suggested schedules for your use.

**Adding a Stem:**



To place your bee on a stem for display you can attach the necessary hardware to its underside with two-part epoxy or similar strong adhesive. For 1/4" Copper Tube stems, a 14-8 Crimp Sleeve works well (**Example 1**). For larger or oddly sized tubes you can instead cut a piece of a slightly larger Copper Tube and flange the ends, epoxy that to the bee, and slide in your stem (**Example 2**).



**Featured Mold:**

**LF254 Large Bee**  
**Mold:** 9.5" L x 7" W  
**Casting:** 8.5" L x 6" W

Keep in mind this tutorial is just one way to use the LF254! Try out different colors, opacities, and types of glass to fill your bee and make your own unique swarm.